

DEDICATION OF HIGHLANDS SECOND ADDITION TO TULSA, I. T.
A SUB-DIVISION OF THE NE 1/4 OF THE SW 1/4 OF SEC. 5,
TOWNSHIP 19 NORTH, RANGE 13 EAST.

Know All Men By These Presents: That Frank C. Giddings and Frank L. Middleton, have caused the above described land to be surveyed and platted into lots, blocks, streets and alleys, as is shown and set forth on the annexed plat and the certificate thereon of J. Gus Patton who surveyed, staked and platted the same, to be known and called "Highlands 2nd Addition to Tulsa, Creek Nation, Ind. Ter; that all streets and alleys are, of the free consent and desire of the owner, hereby dedicated to and for the use of the public except, that all rights to construct street car lines and electric light lines and lay gas mains are reserved by the owners, that all lots and blocks are reserved for use and sale; that the sub-divisions of said tract of land lots, blocks, streets and alleys as shown are with the free consent and in accordance with our desire as sole owners thereof.

Dated and executed this 4th day of October 1907.

Frank C. Giddings

Frank L. Middleton

INDIAN TERRITORY) SS.
WESTERN DISTRICT)

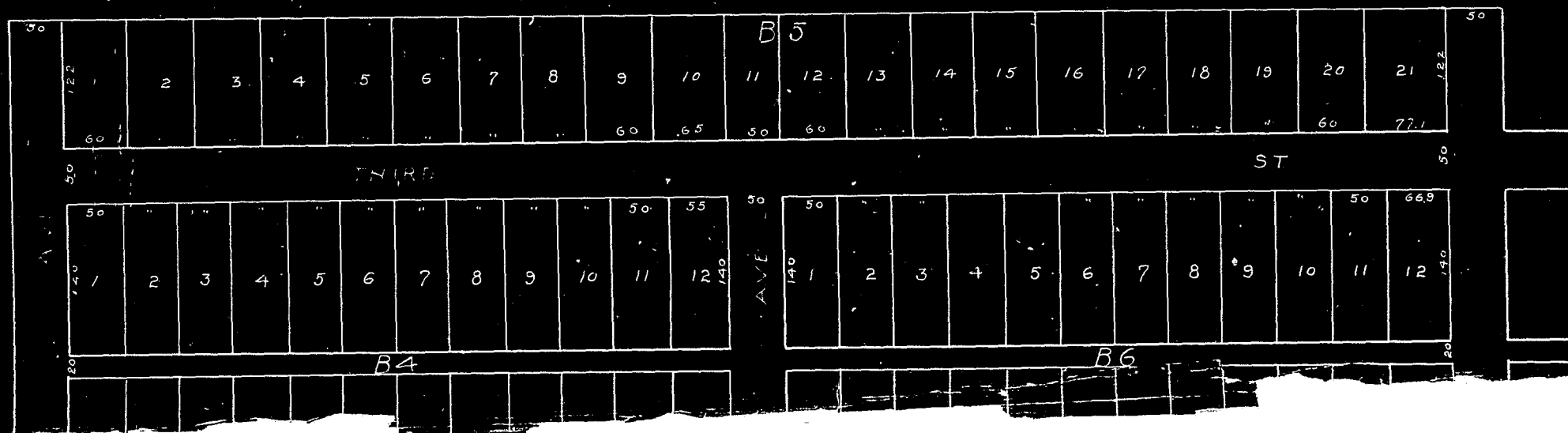
AT
WING
ANDS
ADDITION

of the SW 1/4 Sec 5 Town-

SCALE 100' = 1 INCH.

I hereby certify that I have carefully and accurately surveyed and staked the "Highlands" Second Addition to Tulsa, Ind. Ter, embracing the NE 1/4 of the SW 1/4 of Sec 5 Township 19 N, R 13 East, containing 40 Acres more or less and that this is a correct plat thereof.

Surveyor



Highlands Second Addition to Tulsa