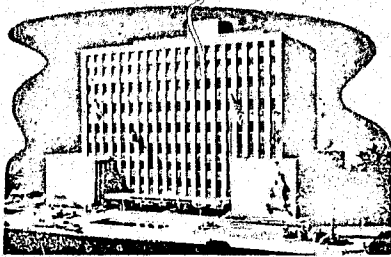


CLYDE WINTERRINGER

County Clerk, Tulsa County

COURT HOUSE
TULSA, OKLAHOMA 74103



STATE OF OKLAHOMA)
COUNTY OF TULSA) ss

I, Clyde Winterringer, County Clerk, in and for Tulsa County, Oklahoma, do hereby certify that the within and foregoing are true and correct copies of the original Book No. 409-10-11 of instruments filed for record in the Tulsa County Clerk's office.

Witness my hand and official seal this the 1st day of March, 19 71.

CLYDE WINTERRINGER, County Clerk

By:

Ruby L. Renegar
Deputy